

MRF reference

Overseas



- Location : Vladivostok, Russia
- Capacity : 800ton/day



Domestic



- Location : Guro-gu, Seoul
- Capacity : 40ton/day



- Location : Daegu City
- Capacity : 800ton/day



- Location : Ansan City
- Capacity : 92ton/day



LANDFILL RECYCLING FACILITY



Business overview

This business recycles or sorts the buried wastes in landfills, whether it is used or not. Also it recycles sorted soil, nonflammable materials (incandescent and landfill materials), and energy conversion of combustible species (SRF production). This business is suitable for businesses of developing landfills into general land.

- Figure : MSW to SRF facilities system in Indonesia



Technical overview

A technology that separates waste by size with screening devices(Trommel screen, Ultra-high molecular PE screen), removes scattered dust by air circulation method, separates combustible waste by wind power, and increases recycling rate of waste.

- The technology of making the best domestic landfill compressor
- Planning and designing to provide optimal solutions
- Direct production of related machinery such as trommel, sorter, conveyor, etc.
- Applying technology such as dynamic separator, gravity sorter, 6-sided compression packing machine
- Reusing soil and stone, and recycling of combustible waste fuel
- Fully installable in the shortest time
- Maintenance and customer services by a qualified technicians



MRF Solutions

Engineering at its best!

We provide an optimum solution for waste sorting system

R&D PROJECT PERFORMANCES

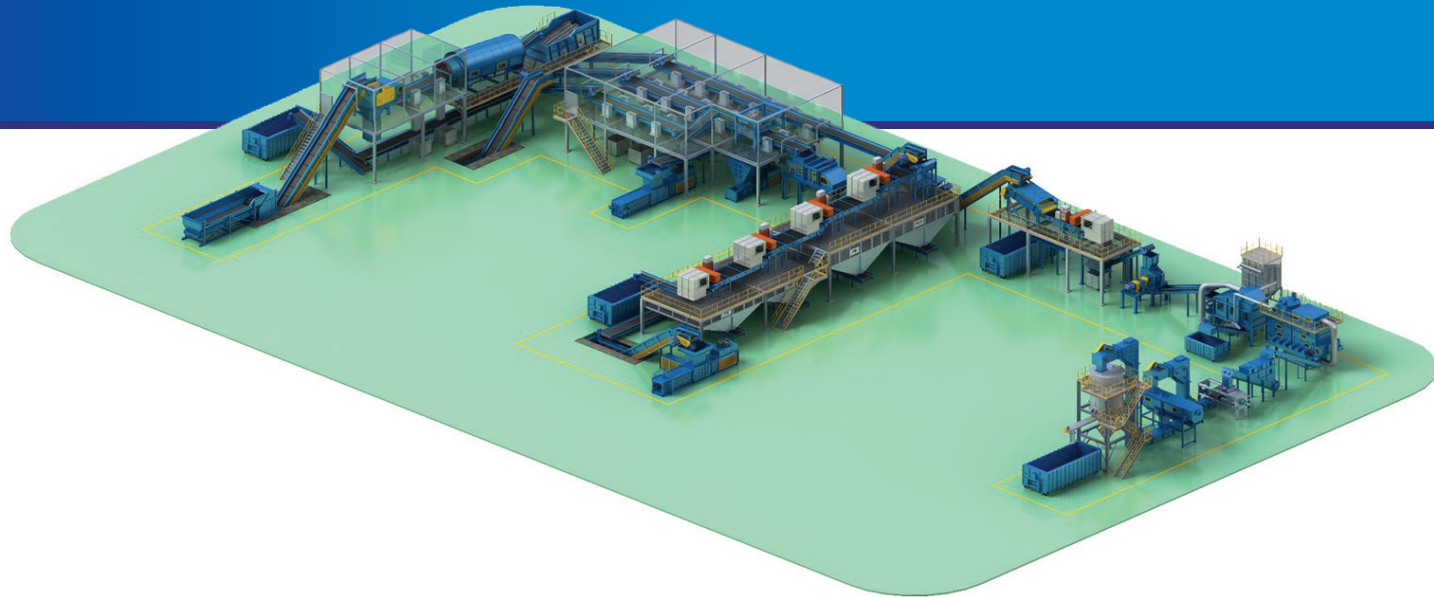
- Feasibility study for WTE(Waste-to-Energy) project in Indonesia supported by KOPIA (Korea Plant Industries Association), 2017
- Indonesia localization project of combustible waste to energy conversion and DME production technology supported by KEITI(Korea Environmental Industry & Technology Institute), 2018
- Feasibility study for generating electricity with SRF converted from landfill waste and MSW in Indonesia supported by KEA(Korean Energy Agency), 2019
- Feasibility study for coconut biochar production plant in Indonesia supported by KOPIA(Korea Plant Industries Association), 2020



www.koreaenc.kr

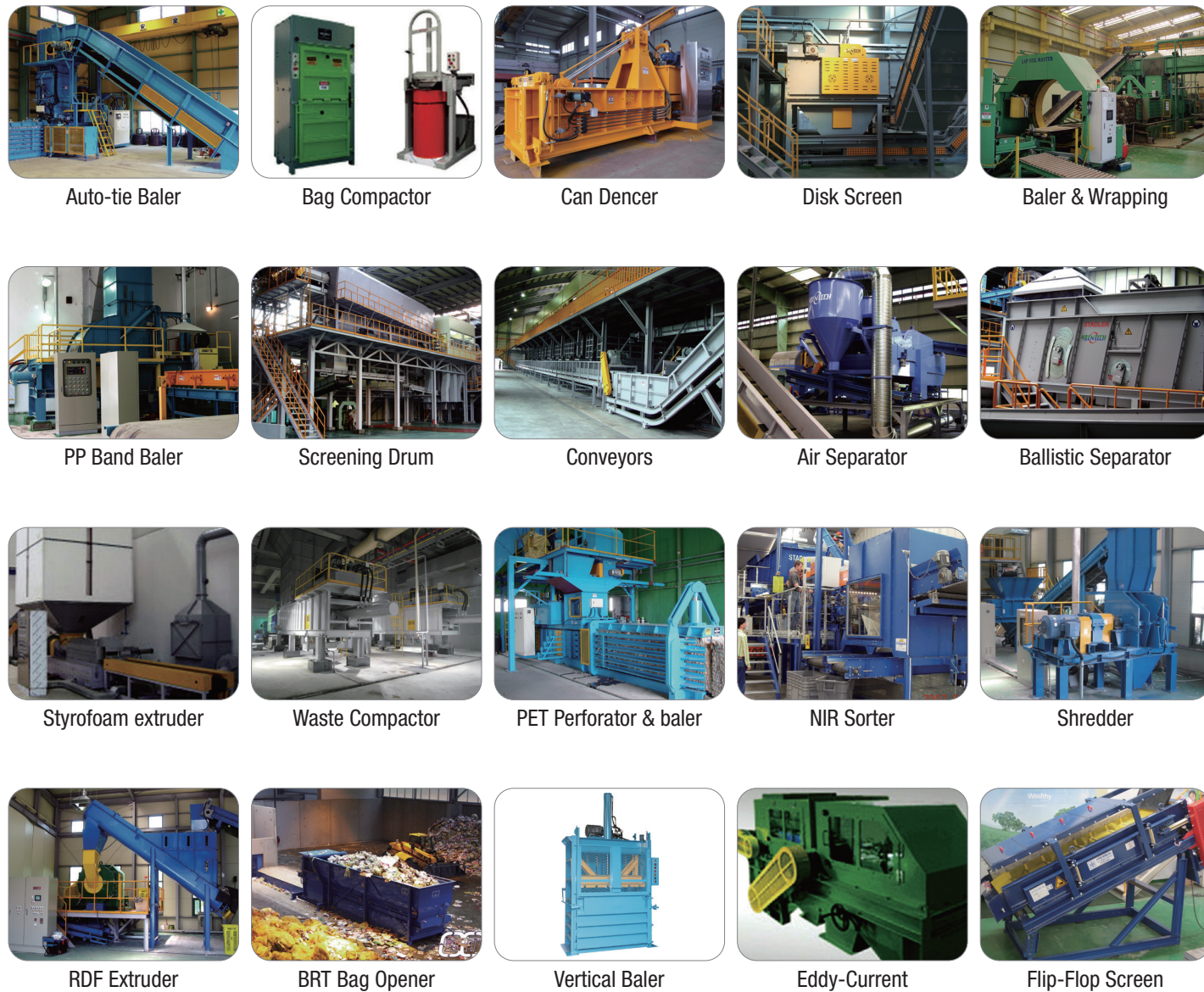
Head-Office 219, Yehak-ro 1-gil, Bujeok-myeon, Nonsan-si, Chungnam-do, S. KOREA
 Tel +82 41 733 8666 Fax +82 41 733 5999
 Daejeon Office 212, 160, Techno 2-ro, Yuseong-gu, Daejeon, S.KOREA
 Tel +82 42 365 2002 Fax +82 42 365 2003
 Overseas Marketing Mobile +82 10 9940 0379
 E-mail jtyoon0125@gmail.com, daehan@koreaenc.kr





Bag opener + Dynamic separator + trommel + Ballistic + Magnetic + Eddy-current + NIR sorter + Air separator + Dryer + Extruder

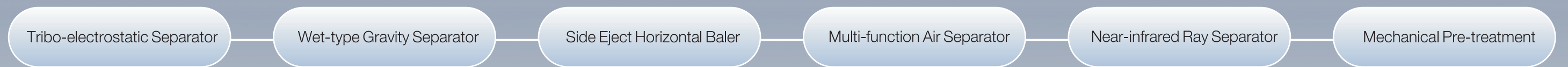
Eco-Facility! Automatic Sorting System! World Best!



Intelligent & Automatic Solution by DAEHAN E&C



Process



Components

